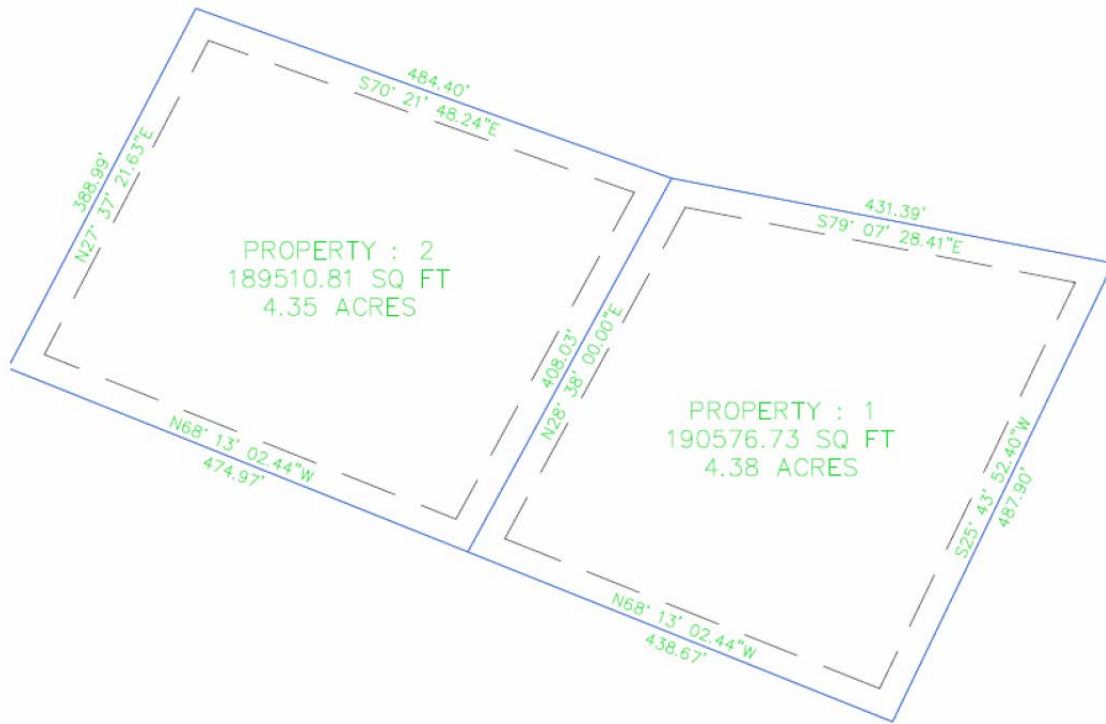


CCE 201, Fall 2014. AutoCAD Exam Drawing, 20 points

- Copy the file "QuizF14.dwg" from Classes to your CCE201 folder. Open file and save.
- Draw and plot to standard engineering scale on ANSI A.
- Submit both the AutoCAD drawing file and the plotted DWG to PDF.pc3 file to TEACH.



Grading

- ✓ Model "Property: 1 " – do not draw/model Property 2 7 pts
- ✓ Plot at 1"=100'. Center parcel on ANSI A 2 pts
- ✓ Labels:
  1. Lot Label, in center of parcel using Romans font, 0.125 plotted text height: 1.5 pts
    - PROPERTY 1
    - 4.38 ACRES
  2. Label two lot lines with Romans font, plotted text height of 0.125 inch 1.5 pts
    - Center bearing/ distance labels and offset 1/8" from bottom of text to lot line 3 pts
- ✓ Assign appropriate layers 1 pt
- ✓ Assign lot line weight 0.5 mm for parcel 1 pt
- ✓ Draw dashed setback line with a 35 ft offset from lot line.
  - Assign dashed2 (0.5x) line type and 0.35 mm line weight for setback 1 pt
  - Trim dashed lines 1 pt
- ✓ Enter text in title block: name and plotted scale 1 pt