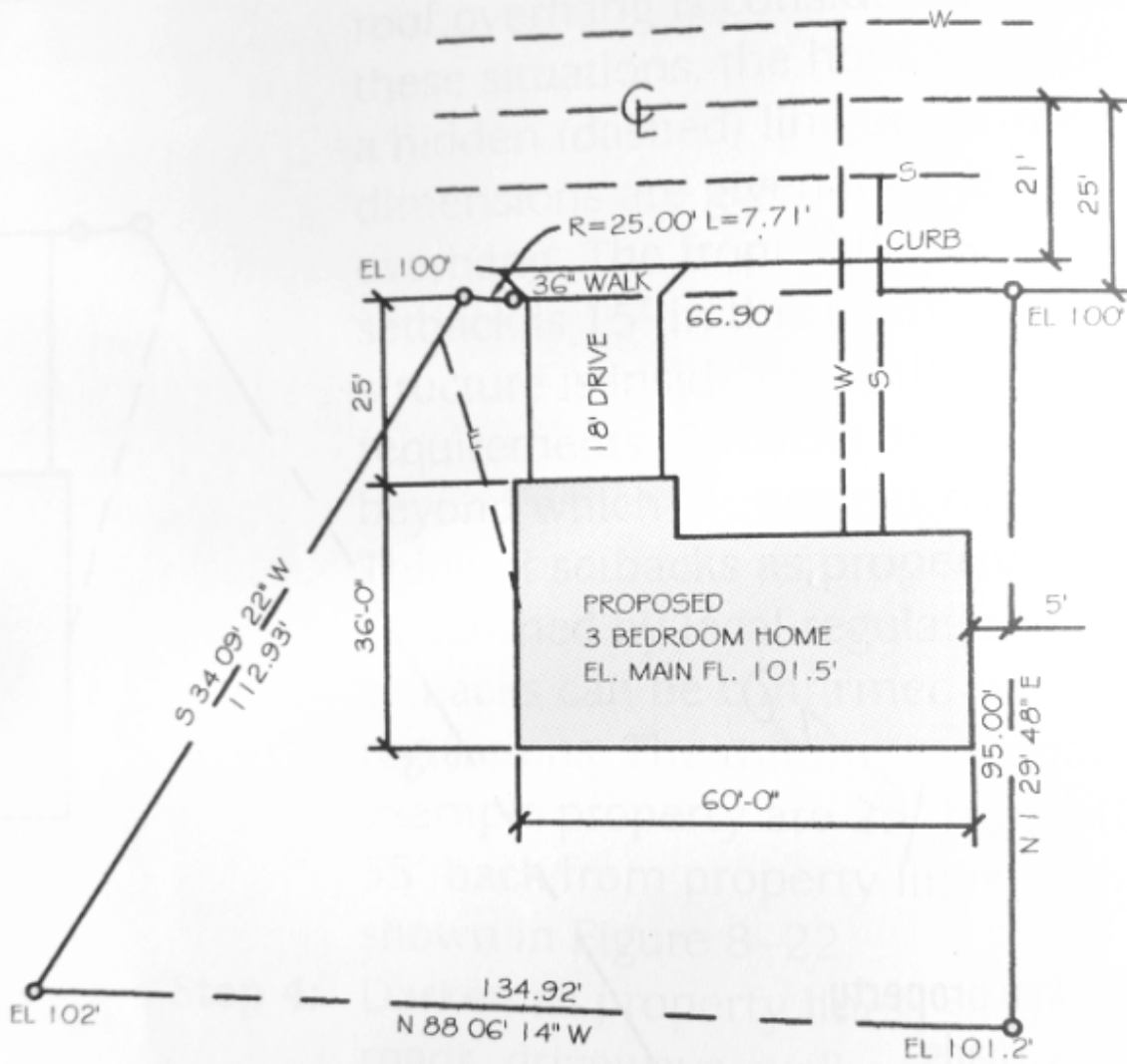


# MIBRADA LOOP



## PLOT PLAN

SCALE 1" = 20'

LEGAL:  
LOT 2 SANDY ESTATES  
CITY OF HOUSTON,  
COUNTY OF HARRIS,  
STATE OF TEXAS



CCE 201 Fall 2016 ACAD Exam, Part II, 55pts

By printing and signing your name you are stating you will adhere to OSU and CCE's academic honesty policies.

Name: \_\_\_\_\_(print name)  
\_\_\_\_\_ (signature)

1. You MUST start with the instructor's file. If you do not – your exam will not be graded and your exam score will be a zero (0).

2. You must submit BOTH a \*.dwg file (AutoCAD) and the PDF plot. If you do not submit both your exam will not be graded and your score will be a zero (0).

3. Name your files: lastname\_ACADEExamF16.dwg and lastname\_ACADEExamF16.pdf

---

- Draw the Plot Plan in ACAD.
- Center Plot Plan on ANSI B and plot to stated scale.
- Submit ACAD drawing file (\*.dwg) and ANSI B Plot at 1" = 20' (dwg to PDF.pc3)

Drawing is to include:

#### Layers

**Use appropriate layers, line weights and line types**

**Place viewport on VP layer, do not plot**

**Use construction layer, do not plot**

#### Survey lot

- Follow distance/bearings on three lot lines: south, west and east. For north lot line just close and do not draw arc.
- Center2 (Center.5x ) line type
- Line Weight 0.5mm

#### House

- Continuous line
- Line weight 0.4 mm
- Garage is 22' by 8'

#### Hatching

- Hatch building with AR-CON. Use line weight 0.18, Scale = 2.0.

#### Driveway

Do not draw 36" walk (the two lines and slight angles).

Do not draw driveway

#### Road Centerline and road right-of way (ROW)

- Draw road centerline; Dashed2 (dashed.5x) line type. Line weight 0.4mm. Label with Centerline symbol.
- Draw curb; continuous line type.
- Draw water: 10' offset from road centerline. Estimate N-S location of water lateral to house. Dashed2 (dashed.5x) line type. Label with "W", two places in drawing.

- Draw sewer: 10' offset from road centerline Estimate N-S location of sewer lateral to house. Dashed2 (dashed.5x) line type. Label with "S", two places on drawing.

**Labels: All text is to be Romans 0.125", all uppercase, default line weight**

- Label south and west lot lines with distance over bearing.
  - Text is to be centered over lot line
  - Text offset is 0.125" plotted from middle of text to lot line
- Label Inside of building footprint as shown. Left Justified, uppercase
  - PROPOSED
  - 3 BEDROOM HOME
  - EL. MAIN FL. 101.5'
  - AC. = (determine the acreage of the survey lot, not the building)
- Dimensions:
  - Change arrow heads to Oblique
  - Dimension House as shown: 60'-0", 36'-0", 25'
  - Dimension Road: 21' and 25'
- Spline Leader: use a splined leader to location of curb

| <u>Grading</u>             | <u>Points</u> |
|----------------------------|---------------|
| Survey lot:                |               |
| Accurate                   | 12            |
| Line weight                | 2             |
| Line type                  | 2             |
| Acres Correct              | 2             |
| Survey lot labels          |               |
| Text height                | 2             |
| Font                       | 2             |
| Offset distance            | 3             |
| House                      |               |
| Accurate                   | 6             |
| House labels               | 2             |
| Hatching                   | 2             |
| Road and utility lines     |               |
| Correct offset             | 2             |
| Line type and line weight  | 2             |
| Labels                     | 2             |
| Dimensions                 |               |
| Scaled with oblique arrows | 2             |
| Romans 1/8"                | 2             |
| Splined leader             | 1             |
| Layers                     | 3             |
| Other                      | 5             |

I have submitted BOTH the ACAD dwg file and the plotted PDF with requested naming conventions. Sign your name: \_\_\_\_\_