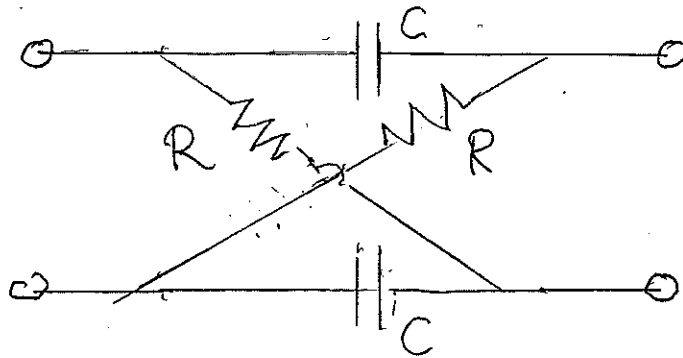


ECE 580 HOMEWORK 1

Due Oct. 5, 2018

1. A clock generator is used to provide a 10 MHz square wave between 0 and 5 V. The capacitive load of the generator is 4 pF. How much power does the generator use?

2. Find the admittance parameters y_{ij} of the two-port circuit shown below.



3. Find the impedance parameters of a gyrator.