

ECE 580 Network Theory  
MIDTERM EXAMINATION

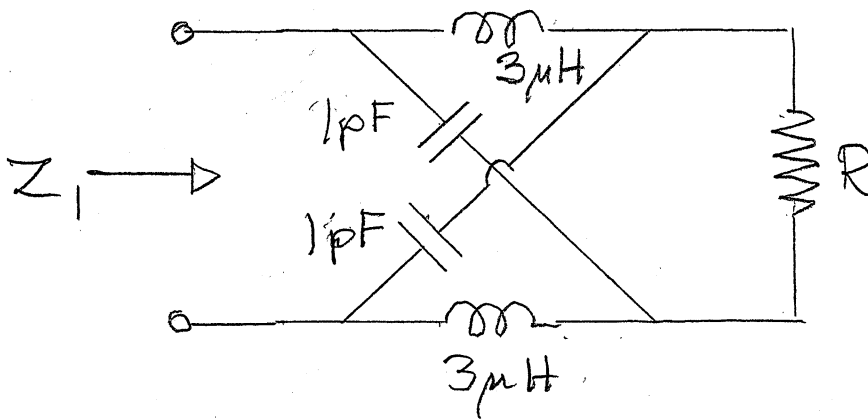
October 23, 2009

Open book

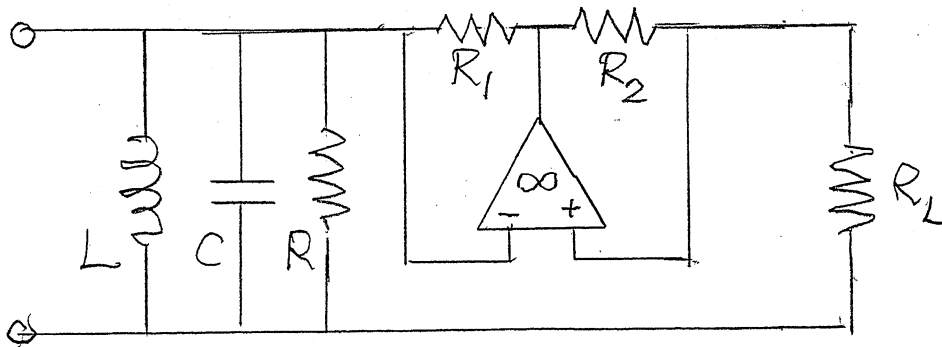
1. In the terminated two-port shown below, the input impedance is  $Z_1$ .

a. At what frequencies is  $Z_1 = R$  for all values of  $R$ ?

b. For what value of  $R$  does  $Z_1 = R$  hold at all frequencies? Why?



2. What is the input impedance of the circuit shown below? What are its possible applications?



3. (Extra credit) Find all node voltages in the circuit shown below.

