

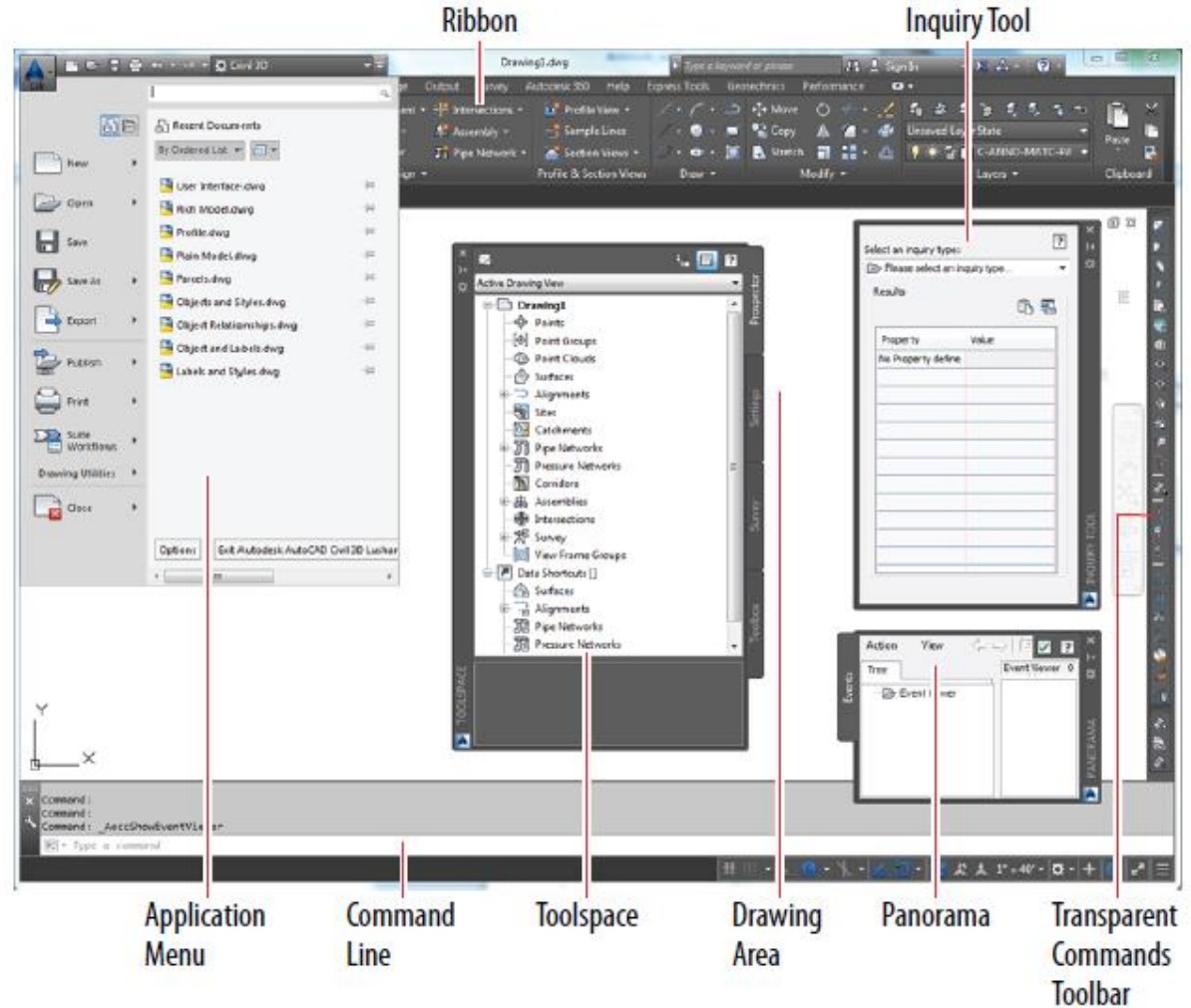
Chapter 1

- Navigating the Civil 3D User Interface
 - Topics
 - Getting to know the Civil 3D user interface
 - Using the Application menu
 - Using the ribbon
 - Using the Toolspace
 - Using the drawing area

Chapter 1

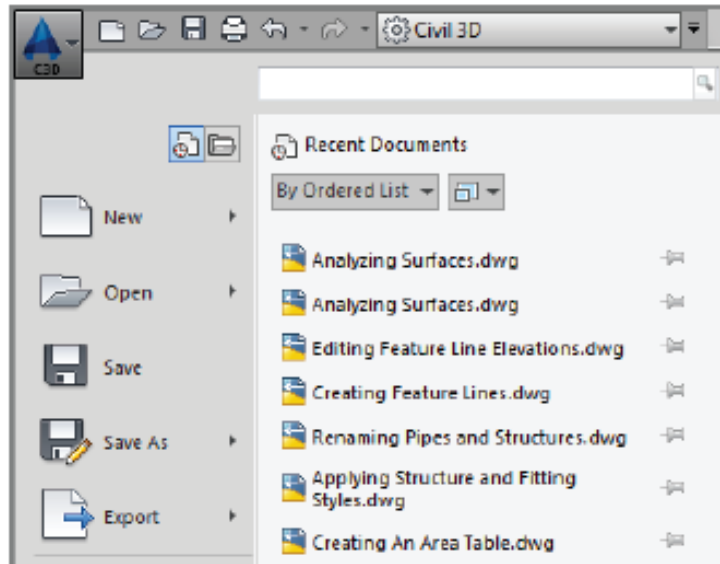
- Navigating the Civil 3D User Interface
 - Topics (continued)
 - Using the command line
 - Using Panorama
 - Using the Transparent Commands toolbar
 - Using the Inquiry tool

The Civil 3D User Interface



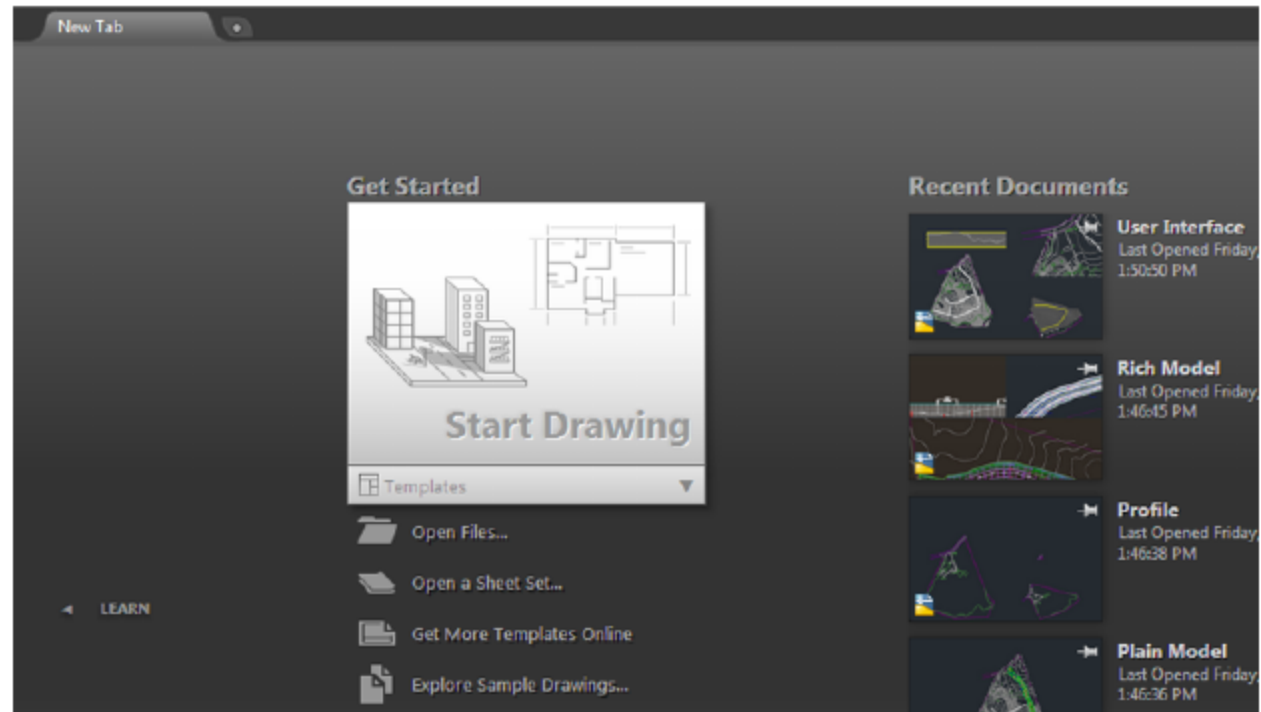
Using the Application Menu

- Used to be the “big red C”; now it’s “the big purple A”
- Contains commands for creating, opening, saving, and printing drawing files



The New 2017 Tab Interface

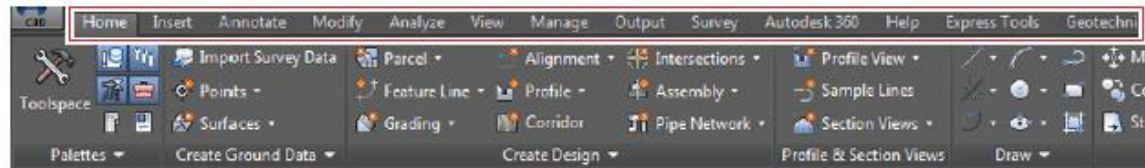
One of the first things you'll notice about Civil 3D 2015 is the new tab interface. From here, you can create new drawings, open existing ones, sign in to Autodesk 360, and even access learning materials.



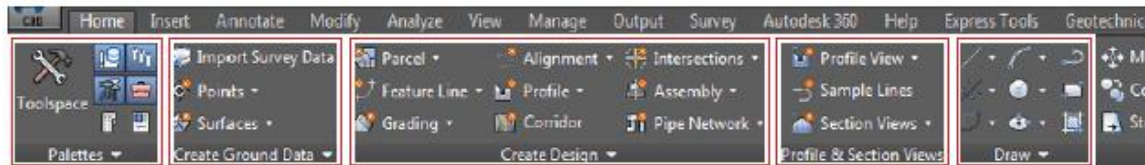


The Ribbon

- Launching pad for most Civil 3D commands
- Divided into tabs



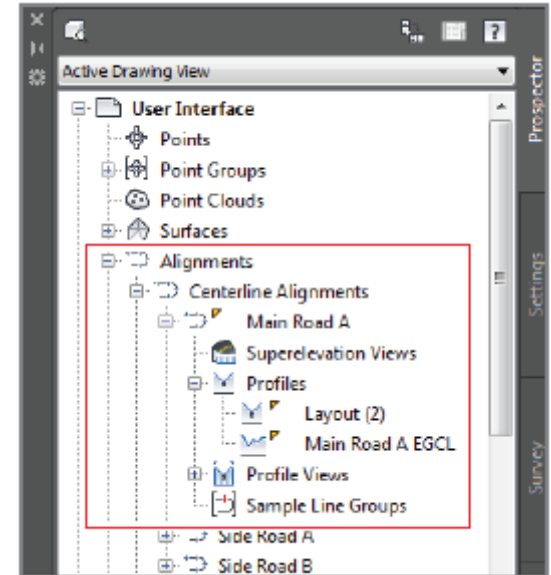
- Each tab divided into panels



- Responds to what you select in the drawing

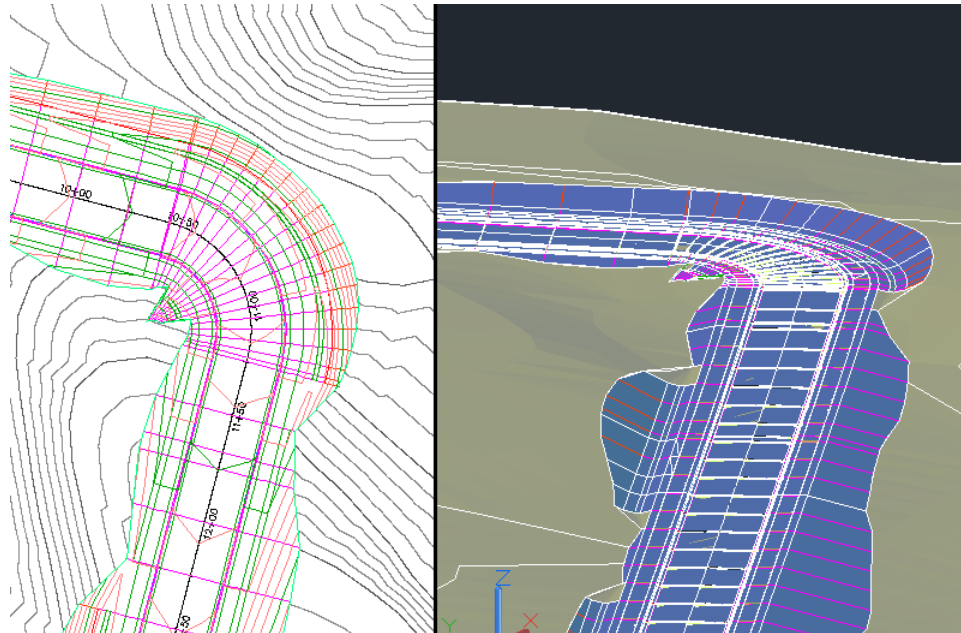
Using the Toolspace

- “Command Center” where all Civil 3D data and settings are laid out.
- Contains Prospector, Settings, Survey, and Toolbox tabs
- Prospector for managing design data
- Settings for managing Civil 3D configuration



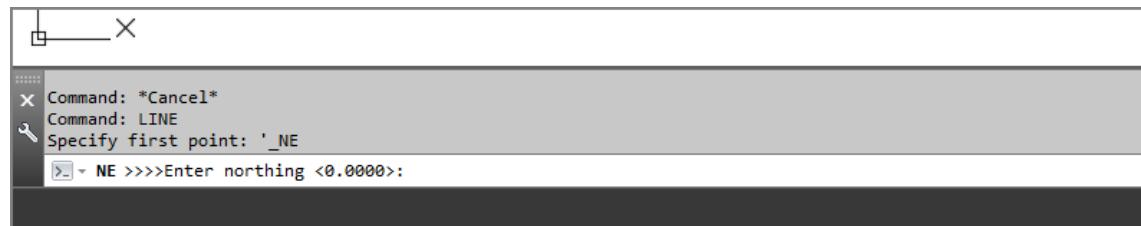
Using the Drawing Area

- Where you can see and “touch” the design
- Plan view *and* 3D view



The Command Line

- The “chat window” is where you exchange information with Civil 3D.
- The command line is constantly reporting what you have done.
- The command line also reports what the software has done.
- Get in the habit of watching the command line; it will help you figure out what to do next.



```
Command: *Cancel*
Command: LINE
Specify first point: '_NE
NE >>>>Enter northing <0.0000>:
```

Panorama

- A multipurpose window that can have multiple tabs
- Used to show and/or modify many different types of information
- Often pops up when needed

No.	Type	Tangency Constraint	Parameter Constrai...	Parameter C...	Length	Ra
1	Line	Not Constrained (Fixed)	🔒	Two points	71.890'	
2	Curve	Constrained on Both Sides (Free)	🔒	Radius	143.335'	
3	Line	Not Constrained (Fixed)	🔒	Two points	33.616'	
4	Curve	Constrained on Both Sides (Free)	🔒	Radius	181.732'	
5	Line	Not Constrained (Fixed)	🔒	Two points	613.854'	
6	Curve	Constrained on Both Sides (Free)	🔒	Radius	78.540'	
7	Line	Not Constrained (Fixed)	🔒	Two points	553.949'	
8	Curve	Constrained on Both Sides (Free)	🔒	Radius	136.280'	
9	Line	Not Constrained (Fixed)	🔒	Two points	552.610'	

Transparent Commands



- Civil engineers and surveyors draw differently than others.
- Transparent commands work in conjunction with other commands to provide methods of drawing that civil engineers and surveyors are accustomed to.

Using the Inquiry Tool

- Used to retrieve information from your design
- Contains many, many tools

