

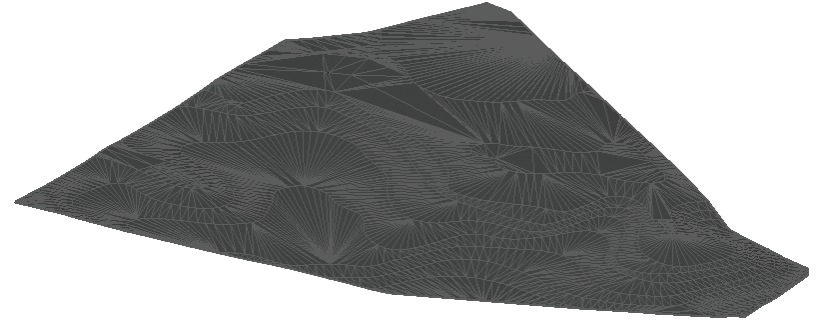
Chapter 2

- Leveraging a Dynamic Environment
 - Topics
 - Connecting objects and styles
 - Connecting labels and label styles
 - Connecting objects to objects
 - Connecting objects to labels
 - The richness of the 3D model
 - Sharing data in a dynamic environment



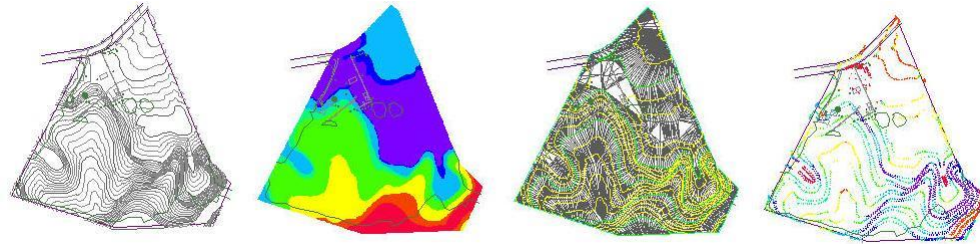
Connecting Objects and Styles

- Object: An intelligent piece of your design model that stores information about itself
- Style: A collection of settings controlling the appearance and behavior of a Civil 3D object

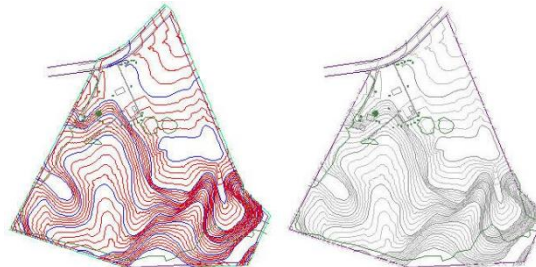


Connecting Objects and Styles

- Change the appearance and behavior of an object by assigning a different style to it.

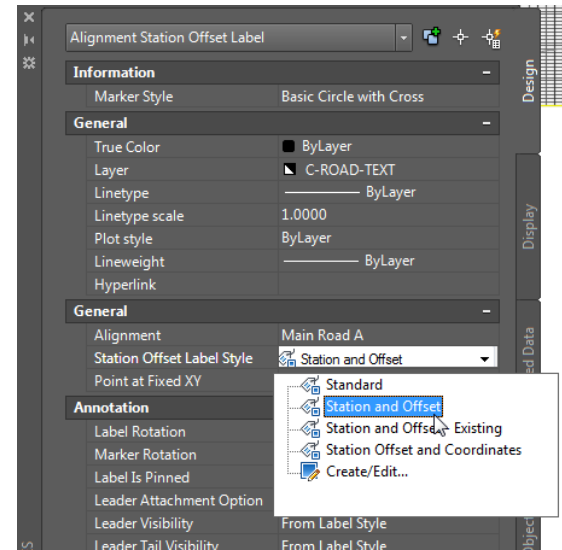
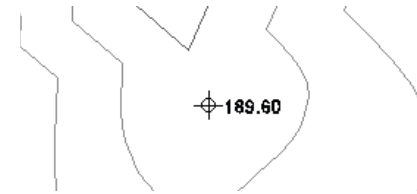


- When a style changes, all objects that reference that style also change.



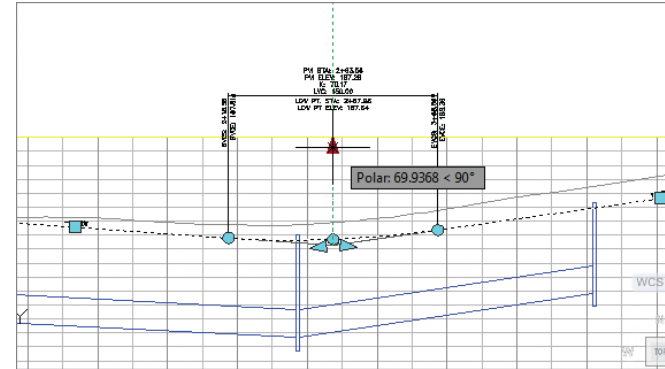
Labels and Label Styles

- Labels are objects too.
- They are also controlled by styles.
- Styles control how a label looks and what information it contains.
- Styles can be assigned using the AutoCAD Properties window.



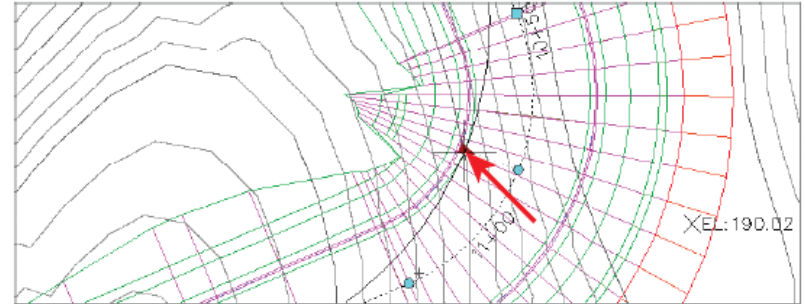
Connecting Objects to Objects

- The power of Civil 3D is in the ability of its objects to interact with one another.
- A project is a collection of mini-designs.
- Civil 3D enables these mini-designs to be dynamically connected.
- Editing one mini-design can automatically update others that are related to it.



Connecting Objects to Labels

- Labels also form a dynamic relationship with the objects that they annotate.
- When an object changes, its labels update automatically.
- Labels are important; they are what is used to build the project.
- They must be correct; having them dynamically linked to the design helps ensure that they are.



The Richness of the 3D Model

- In recent years, the industry has slowly evolved from 2D design to 3D design.
- Many people you will work with may still think about design in 2D.
- Civil 3D provides huge opportunities but only if you build and leverage a 3D model.
- The initial design of a 3D model will take more time when compared to “traditional” methods.
- Subsequent designs, redesigns, and adjustments will be much quicker.
- In the long term, 3D design is much more efficient.



The Richness of the 3D Model

- Some common industry practices are not possible without a 3D dynamic model.
 - Building information modeling (BIM): Intelligent models used for design, construction, and facilities management
 - GPS-guided machine control: 3D computer models uploaded to earthmoving machines
 - Construction simulation: Staging and planning of materials and activities
 - Visualization: 3D renderings and animations

Sharing Data

- Data shortcuts are links that can be used to show and use one drawing's data in another.
- An instance of one drawing's data in another is called a *data reference*.
- Data shortcuts and data references allow multiple people to work on different aspects of the same project simultaneously, in a team environment.

