

Stack Kearney Exterior Wall

1. For the Kearney Model we are using a STACKED exterior wall (stone and J wall) from Level 1 to Lower Roof.
2. Copy folder StackedWall from classes.
3. What is the Kearney wall type on third level? Review Plans. Go to Sheet –A000 – wall “J” (shown below)
4. In this tutorial you will make two small test walls and one stacked wall. Then you will change your exterior Kearney wall type to this new stacked wall.
5. Open Kearney Model and off to the side make two small walls.
 - a. Kearney Stone wall 18”
 - b. Make new J Wall. See below for wall layers.

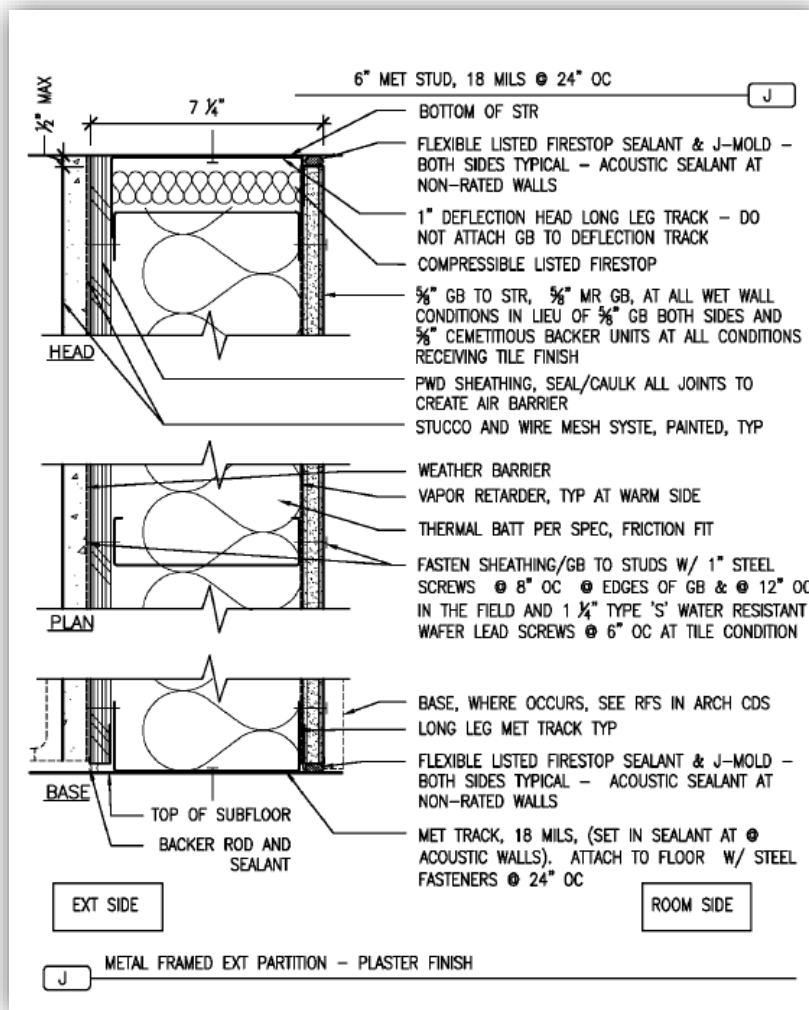
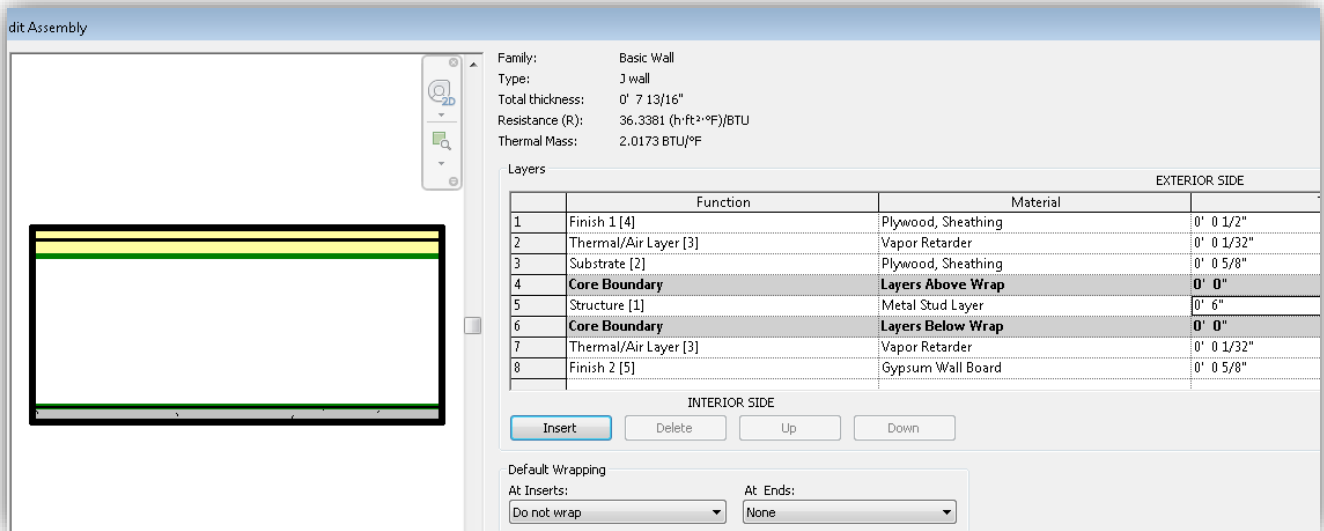


Figure 1. J Wall

J WALL:

From exterior to interior

- Plywood Sheathing – (Finish 1, 4) - ½”
- Vapor retarder - (Thermal/Air, 3) – 1/32”
- Plywood sheathing – (Substrate, 2) - 5/8”
- Metal stud –(Structure, 1) - 6”
- Vapor retarder (Thermal/Air, 3) – 1/32”
- Gypson Board – (Finish, 2, 5) - 5/8”



c. After setting wall layers change VIEW (bottom left) to add Sweeps.

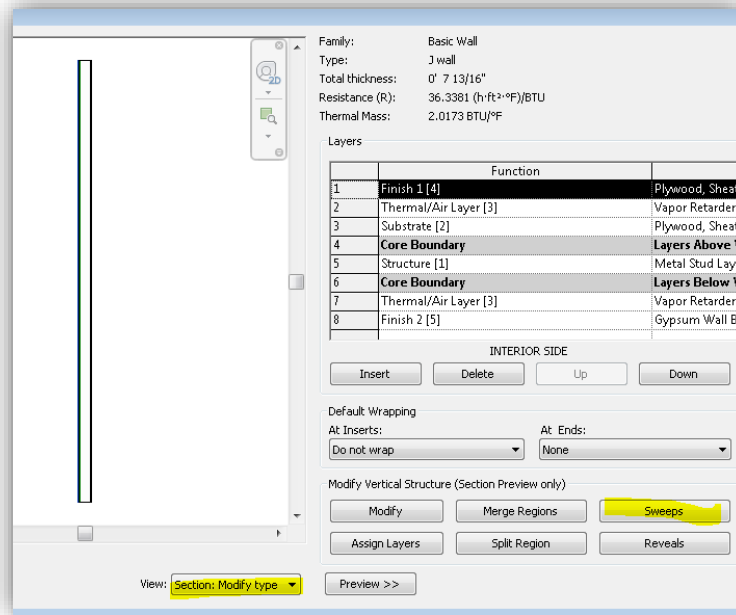


Figure 2. J Wall Sweeps

- d. Select Sweeps
- e. **Load** wall sweep file that you copied in step 2. Go find the file “profile.rfa” then select **ADD**.
- f. Add settings as shown below. **Offset should be -0’ 7 13/16” (wall thickness)**

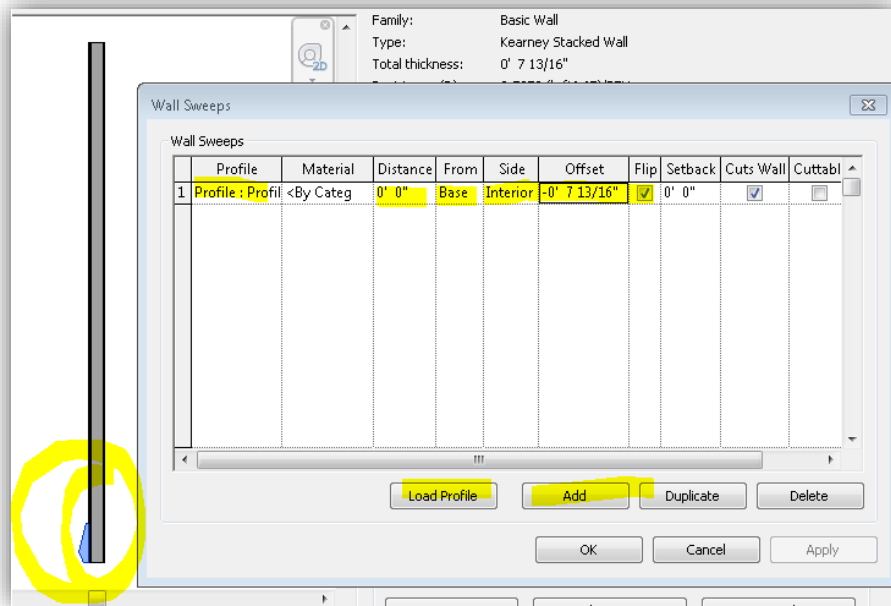


Figure 3. Wall sweeps settings for J wall.

- g. Create J wall by the stone wall.
- h. View both walls in 3D.

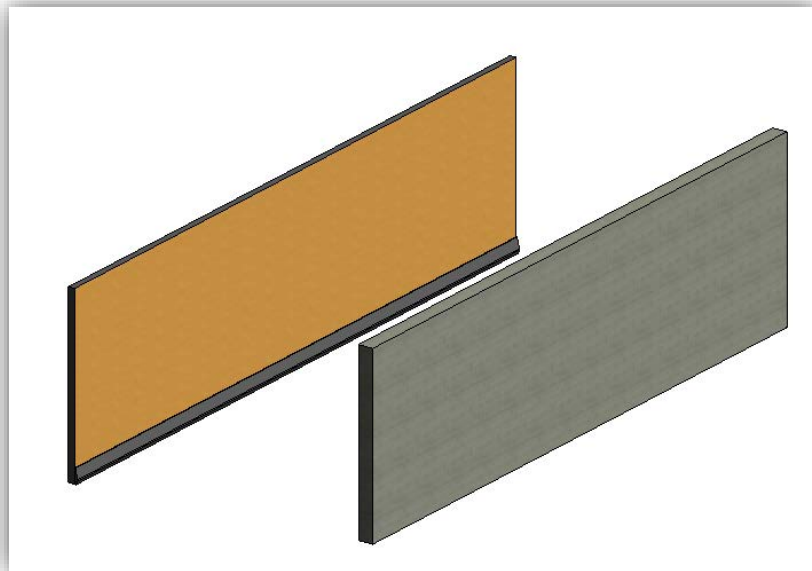


Figure 4. J wall with sweep and stone wall.

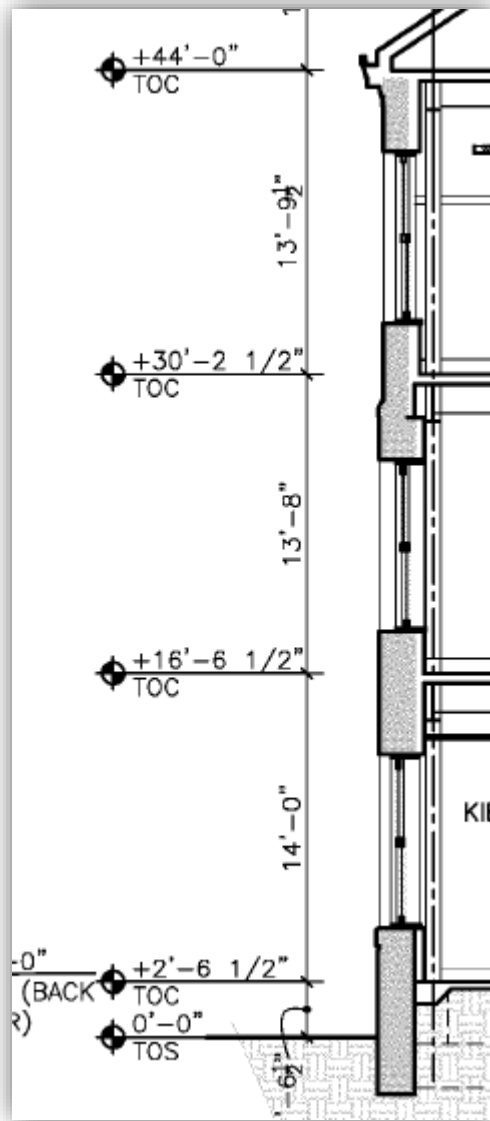
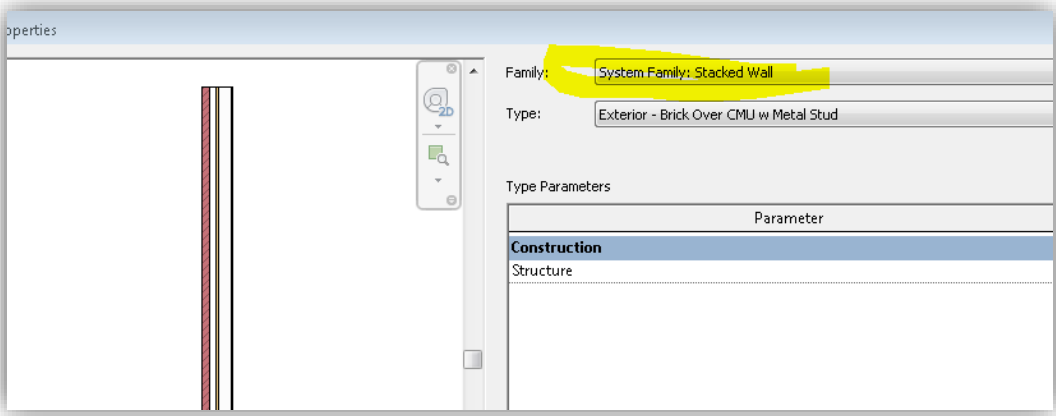


Figure 5. Wall levels

6. After two walls are made edit properties – easiest to do this 3D view.
 - i. Select stone wall
 - Stone Wall: Level 1 (2'-6 1/2") to Level 3 (30'- 2 1/2"), height offset -4'-0"
 - ii. Select J wall
 - J Wall: Level 3 to Lower Roof (44'-0")
 - iii. See figure 7 on following page. Save model
7. Create a **New Stacked Wall** – select J Wall – Duplicate, name it: Kearney Stacked SP19
8. Select Stacked wall as shown below:



9. Then Edit wall as shown below:

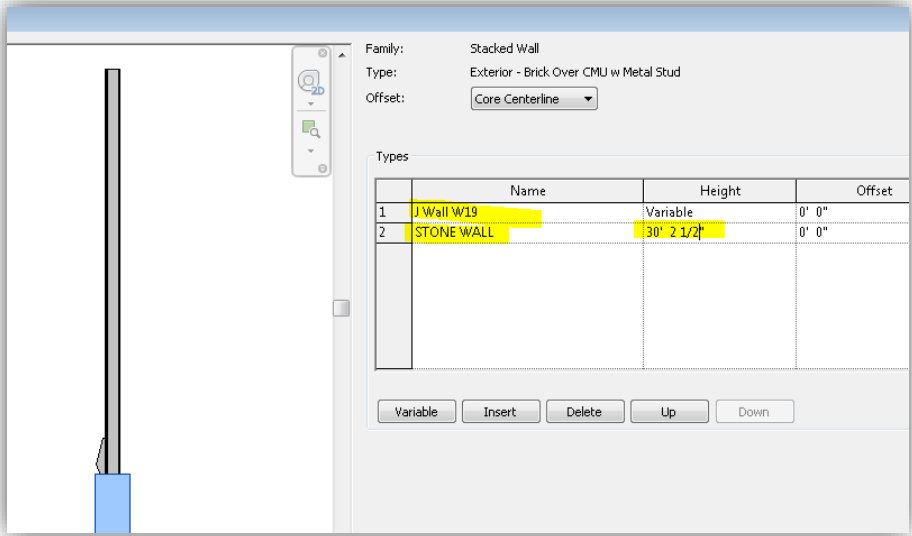


Figure 6. Kearney Stacked Wall

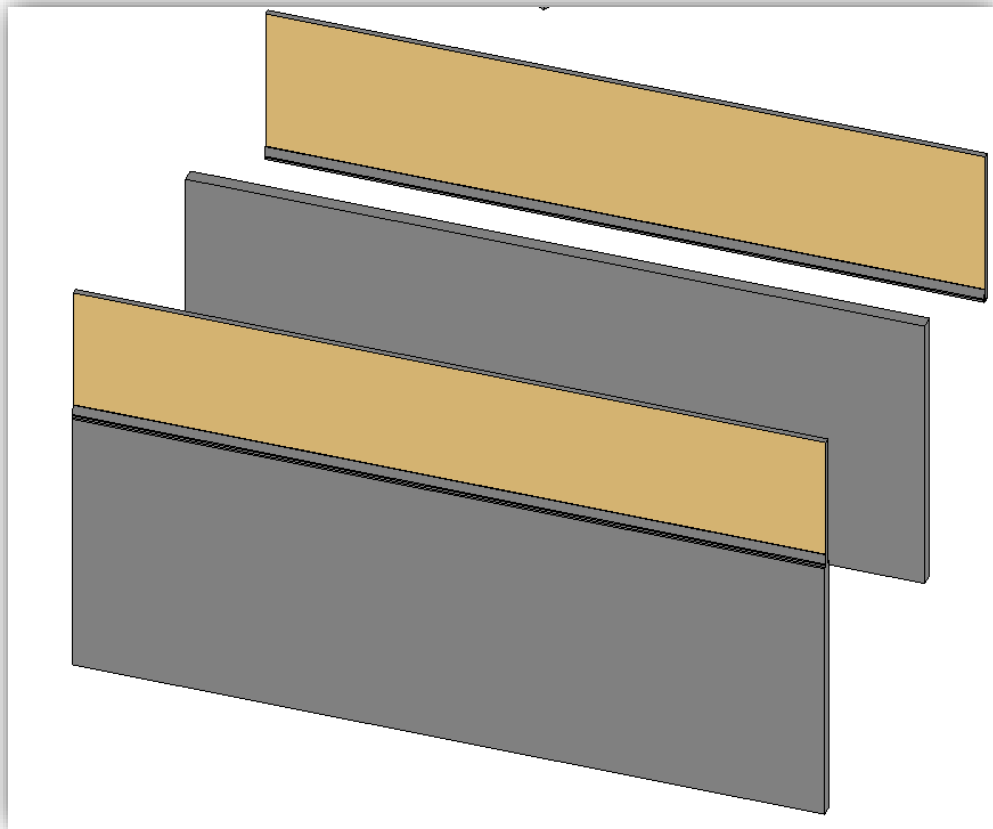


Figure 7. Walls - stone, J, and Kearney stacked

9. Select all exterior walls on Kearney and change wall type to Kearney Stacked Wall.
10. Done!
 - a. Save Kearney model.